



Estimation of Zinc Levels in Covid19 Patients And Its Clinical Outcome In Tertiary Care Hospital Of Madhyapradesh

¹Dr. Thakur Dilbagh Singh,²Dr. Roopali Patel,³Dr. Nikhil Gupta,⁴Dr. Ateeque Ur Rahman

¹Senior Resident, ³Assistant Professor, ⁴Associate Professor

Department of Medicine,

^{1,3}GMC Bhopal

²PGMO Civil Hospital Bairagarh Bhopal

⁴People's Medical College Bhopal

***Corresponding Author:**

Dr. Thakur Dilbagh Singh

HIG 2, Flat No 308 ,Rachna Nagar ,Bhopal

Type of Publication: Original Research Paper

Conflicts of Interest: Nil

Abstract

Introduction: Zinc is a very important micronutrient that influences host-pathogen interplay at infection. Zinc balances immune responses, and have proven direct antiviral action against some viruses.

Aim & Objectives : We tested that serum zinc content influences COVID-19 disease progression, and thus will represent a useful biomarker.

Material & Methods: We did an observational cohort study with 249 COVID-19 patients admitted in Gandhi medical college & Hamidia hospital Bhopal. We have studied COVID-19 severity and progression attending to SZC at admission.**Results:** Our study demonstrates a correlation between serum zinc levels and COVID-19 outcome. Serum zinc levels lower than 50 µg/dL at admission correlated with worse clinical presentation, longer time to reach stability, and higher mortality.

Conclusion: Low SZC is a risk factor that determines COVID-19 outcome. We encourage performing randomized clinical trials to study zinc supplementation as potential prophylaxis and treatment with people at risk of zinc deficiency

Keywords: SARS-CoV-2; zinc; clinical outcomes,SZC,ARDS,ZD,TNF ALPHA,RTPCR

Introduction

Infections with severe acute respiratory syndrome coronavirus 2 result in a systemic disease from no symptoms to severe disease, with pneumonia and acute respiratory distress symptom being the most common^[1].

Zinc deficiency (ZD), due to low zinc intake results in an immune imbalance that ultimately causes a major public health problem with high prevalence in elderly and individuals with chronic diseases. ZD is associated with higher levels of interleukin (IL)-1beta and tumor necrosis factor (TNF)-alfa, as well as with altered activities of monocytes, neutrophils, and natural killer (NK) cells^[2]. Correspondingly, ZD

results in increased susceptibility to inflammatory and infectious diseases, including acquired immune deficiency syndrome, measles, malaria, tuberculosis, and pneumonia. Remarkably, in vitro zinc inhibited the binding of the SARS coronavirus RNA-dependent RNA polymerase to its template and the subsequent elongation, as well as viral replication in a cell culture^[3].

In this study, we focus our observational study on the putative association between the zinc status of hospitalized COVID-19 patients with disease progression and clinical outcomes^[4]. Moreover, we address in cell culture the potential of zinc supplementation to directly block SARS-CoV-2 multiplication in Vero E6 infected cells^[5].

Materials and Methods

Study Design and Participants

A cohort study was performed at Gandhi medical college and Hamidia hospital Bhopal. All patients admitted with COVID-19 for 48 h between 1 March and 1 April 2021 were included. COVID-19 was defined as a SARS-CoV-2 infection, confirmed by RT PCR performed in nasopharyngeal samples obtained by trained personnel at hospital admission, and by fulfilling clinical diagnostic criteria. These include any of the following: respiratory symptoms (dyspnea, cough, sore throat, changes in taste/smell) and chest X-ray findings (uni or bilateral interstitial infiltrates) that made the diagnosis probable in the current epidemiological situation. The Institutional Ethics Committee of Hamidia hospital Bhopal approved the study, and due to the nature of the retrospective data review, waived the need for informed consent from individual patients.

Procedures

Demographic, clinical, epidemiological, and the whole-episode (laboratory workup, vital signs, treatment) data were extracted from electronic medical records using a standardized data collection method. Comorbidity was collected individually and as the Charlson Comorbidity Index, a clinical score that relates long term-mortality to patient comorbidity. It is considered the absence of comorbidity to be 0–1 points and high at >3 points.

Laboratory workups were systematized with an admission protocol that included a fasting blood sugar, complete kidney and liver profile, electrolytes, blood count, coagulation profile, inflammatory markers interleukin-6, serum ferritin, D-dimer, and myocardial enzymes. Zinc and selenium levels were detected by electrochemiluminescence. Follow-up laboratory workups in the clinical setting included C-reactive protein and IL-6, which made possible to determine the IL-6 peak.

Definitions

Time to Recovery (TR)

Time to recovery (TR) or time to clinical stability was defined as the time elapsed since the patient's admission to oxygen saturation >94% ($\text{FiO}_2 = 21\%$), normalized level of consciousness, heart rate <100

rpm, systolic blood pressure >90 mm Hg, and body temperature <37.2 °C.

Clinical Severity

Clinical severity was determined at admission with a modified early warning score. The same score was used for the follow-up during the admission.

Low Zinc Levels

Since levels of zinc have a diurnal variation, all samples were collected through a fasting blood taken at 8 am. In our cohort, the Q1 was 50 µg/dL (7.6 µM). According to previous publications, 50 µg/dL is a proper threshold of abnormally lower zinc concentration to predict clinical signs. We considered this as a predictive factor the lower range (<50 µg/dL).

Cell Culture

Vero E6 cells were grown as described. When indicated, fetal bovine serum (FBS) was incubated according to the manufacturer's instructions with Chelex 100 resin (Bio-Rad Laboratories, Hercules, CA, USA) to generate Zn²⁺-free growth medium. ZnSO₄ was added as needed to the final medium to generate specific Zn²⁺ concentration conditions. Chloroquine was prepared in water at 10 mM and used at the desired concentration.

Zinc Measurements

Cells were seeded and grown in multi-well 24 plates until reaching 80% of confluence. Cells were incubated with 1 µM of FluoZin-3AM (Invitrogen, Darmstadt, Germany) or 25 µM of Zinquin (Sigma-Aldrich, Darmstadt, Germany) for 30 min at 37 °C (5% CO₂) in isotonic solution containing (in mM) 140 NaCl, 5 KCl, 1.2 CaCl₂, 0.5 MgCl₂, 5 glucose, and 10 Hepes (300 milliosmoles/liter, pH 7.4), plus different concentrations of Zn²⁺ and/or chloroquine (CQ). Cells were then dissociated with Trypsin 0.05% in 0.53 mM EDTA, and were washed with PBS 1x. Fluorescence was quantified using an LSRII flow cytometer. Further analysis was performed using Flowing software (Perttu Terho, Turunylipisto, Turku, Finland).

For in vivo confocal imaging, cells grown on 22 mm coverslips were incubated with Lysotracker, together with FluoZin-3AM or Zinquin, in a solution with 50 µM Zn²⁺ for 30 min; they were then washed twice with PBS and placed under the microscope in

isotonic solution for imaging with an SP8 Leica microscope (Wetzlar, Germany).

Viability Assays

Cells were exposed to different Zn²⁺ and CQ concentrations for 48 h. Then, 3-(4,5-dimethylthiazol-2-yl)-2,5-diphenyltetrazolium bromide (MTT) reagent was added to obtain a final concentration of 0.5 mg/mL. Cells were incubated 2–3 h at 37 °C. After that, the supernatant was removed, and cells were resuspended in 100 µL of DMSO. The absorbance was read at 570 nm.

Virus Infection and Quantification

Vero E6 cells were infected with SARS-CoV-2 strain hCoV-19/Spain/VH000001133/2020 (EPI_ISL_418860), and 48 h later viral RNA from the supernatant was extracted using the Quick-RNA Viral Kit (Zymo Research, Irvine, CA, USA). SARS-CoV-2 production was quantified by qPCR with the qScript XLT One-Step RT-qPCR ToughMix, ROX (Quanta Bio- sciences, Beverly, USA), using the specific probe 2019-nCoV_N1-P, 5r -FAM-ACCCCGCATT ACGTTTGGTGGACC-BHQ1-3r ; as well as primers 2019-nCoV_N1-F, 5r -GACCCCAAATC AGCGAAAT-3r ; and 2019-nCoV_N1-R, 5r -TCTGGTTACTGCCAGTTGAATCTG-3r (Biomers,Ulm, Germany).

Western Blot

Cells were treated with 0, 10, or 50 µM of Zn²⁺ and 10 µM of CQ for 24 h. Then, cells were washed twice with cold PBS and lysed with 35 µL of lysis buffer (50 mM Tris-HCl, pH 7.4, 150 mM NaCl, 5 mM EDTA, 0.5% NP-40, 1 mM DTT, 10 mM 13-GP, 0.1 mM Na₃VO₄, and protease inhibitors). Lysates were vortexed for 30 min at 4 °C and centrifuged at 10,000 g to remove aggregates. Lysates were boiled at 95 °C and placed in ice for 1 min. 20 µL of each sample were loaded onto a 12% or 14% polyacrylamide gel. After transfer, membranes were blocked with 5% milk in TBS-Tween 0.1% for 1 h at room temperature. Primary antibodies were diluted in blocking solution—microtubule-associated proteins 1A/1B light chain 3B (LC3) (L8918, Sigma-Aldrich, Darmstadt, Germany) at 1:500, p62 (ab155686, Abcam, Cambridge, UK) at 1:1000, and glyceraldehyde 3-phosphate dehydrogenase (GAPDH) (ab8245, Abcam, Cambridge, UK) at

1:1000 and incubated overnight at 4 °C. Anti-rabbit or anti-mouse horseradish peroxidase (HRP) secondary antibodies (1:1000; GE Healthcare, Chicago, IL, USA) were used.

Statistical Analysis

Analysis of the main demographic characteristics of the cohort and the main clinical (laboratory, treatment and outcome) characteristics of the episode was done. Continuous and categorical variables were presented as median (interquartile range (IQR)) and absolute number (percentage), respectively. A Mann–Whitney U-test, χ^2 test, and Fisher’s exact test were used to compare differences between individuals with serum zinc levels above and below 50 µg/mL. Bivariate comparisons and a multiple logistic regression model studying the impact of admission serum zinc in in-hospital mortality were fitted adjusting by age, sex, Charlson comorbidity index, and severity of the episode. Taking into consideration the number of deaths observed, and to avoid overfitting the model, we selected the most significant variables and those that provided a more general characterization of the individuals. We excluded variables if they had collinearity with MEWS or age. We created exploratory alternative models, including previously well known individual mortality risk factors, such as chronic kidney disease, lung disease, or diabetes. We selected the final model adjusted by age, sex, severity, and Charlson comorbidity index. Significance was a p-value <0.05.

In the in vitro assays, we applied either an unpaired Student’s t-test (when comparing two conditions), or one way analysis of variance (ANOVA) followed by a Bonferroni post-hoc test (when comparing control with any other condition) was applied. All plots comparisons and p values are described in figure legends. Analysis was performed using GraphPad software (San Diego, CA, USA).

Results

Influence of SZC in COVID-19 Outcome

We included 249 consecutive adults admitted to the COVID-19 unit between 1 January and 30 April 2021. The median age of participants was 65 (54–75) years, and 49% were female. Table shows the baseline characteristics of the cohort and the differences between individuals with SZC <50 µg/dL and 50 µg/dL at onset. Hypertension was the most prevalent

comorbidity. At admission, the overall severity according to MEWS score was 2 (1–3). Fever, cough, and dyspnea were the most common symptoms, with frequencies of 203 (81%), 198 (79%), and 151 (60%), respectively. Inflammation was a hallmark of the episode, with 224 (87.5%) individuals having abnormal IL-6 at admission and with a median IL-6 of 42 pg/mL (15–89), a median C-reactive protein of 7.5 mg/dL (3.5–15.2), and a median D-Dimer of 800 UI/l (470–1450). SZC median at admission was 61 µg/dL (9.3 µM), with 58 (23%) of the individuals presenting SZC < 50 µg/dL. Individuals with serum zinc levels <50 µg/dL had higher prevalence of chronic kidney disease and chronic respiratory disease (9% vs. 2%, $p = 0.024$, and 16% vs. 7%, $p = 0.041$, respectively). Moreover, this group had a more severe clinical presentation MEWS score (2 (2–3) vs. 2 (1–3); $p = 0.005$) and significantly greater inflammation, measured by the nonspecific marker C-reactive protein (14.6 mg/dL vs. 7 mg/dL; $p = 0.03$) and the more specific IL-6 (77 pg/mL vs. 32 pg/mL; $p < 0.001$). At admission, SZC correlated negatively with inflammation measured by IL-6 (Pearson’s $r = 0.307$; $p < 0.001$), and interestingly, also correlated negatively with the highest value of IL-6 during the episode (Pearson’s $r = 0.317$; $p < 0.001$). This negative correlation was also observed with the nonspecific inflammatory markers, such as ferritin (Pearson’s $r = 0.227$; $p = 0.001$) and C-reactive protein (Pearson’s $r = 0.315$; $p < 0.001$). We also found a correlation between SZC at admission and procoagulation factors, such as D-dimer (Pearson’s $r = 0.317$; $p = 0.048$).

The median time to clinical recovery in our cohort was 9.5 days (6–18). However, subjects with SZC at admission <50 µg/dL needed longer TR compared with those with zinc ≥ 50 µg/dL: 25 days (14–36) vs.

8 (5–14) days, respectively; $p < 0.001$. Moreover, SZC at admission was correlated negatively with the TR of the episode (Pearson’s $r = 0.441$; $p < 0.001$). Two alternative multivariable regression models were created, one using zinc as a quantitative continuous variable, and by adjusting for age, sex, severity, and Charlson comorbidity index, the TR was associated with low SZC at admission (beta-coefficient = 0.21 (95% CI= 0.316 to 0.097; $p < 0.001$)) (Table S2A). In an alternative model, adjusting serum zinc as a dichotomous variable (SZC < 50 µg/dL or ≥ 50 µg/dL) and adjusting by age, sex severity, and Charlson comorbidity index, serum zinc levels <50 µg/dL negatively impacted the TR (beta-coefficient = 14.1 (95% CI = 4.29–23.94; $p = 0.004$)). Twenty-one individuals (9%) died during this period. SZC at admission was significantly higher among individuals who survived (62 µg/dL (52–72)) compared to those who died (49 µg/dL (42–53); $p < 0.001$). Individuals with SZC at admission <50 µg/dL had a mortality of 21%, which was significantly higher compared to the 5% mortality in individuals with zinc at admission ≥ 50 µg/dL ($p < 0.001$). We fitted a multivariable logistic regression model, including 249 patients with data for all variables. When adjusting by age, sex, Charlson comorbidity index, and severity, the model showed an odds ratio (OR) for in-hospital death of 0.94 (95% CI = 0.899 to 0.982; $p = 0.006$) per unit increase of serum zinc at admission. In an alternative age, sex, severity and Charlson comorbidity index-adjusted model with the predictive variable SZC at admission <50 µg/dL, the adjusted OR for in-hospital death was 3.2 (95% CI = 1.01 to 10.12; $p = 0.047$). Other models, adjusting by individual mortality risk factors, along with age, sex, and severity, did not show differences with the final model for in-hospital mortality.

Table 1. Main clinical characteristics of the cohort- Differences between individuals with plasma zinc at admission at <50 mcg/dL and ≥50 mcg/dL

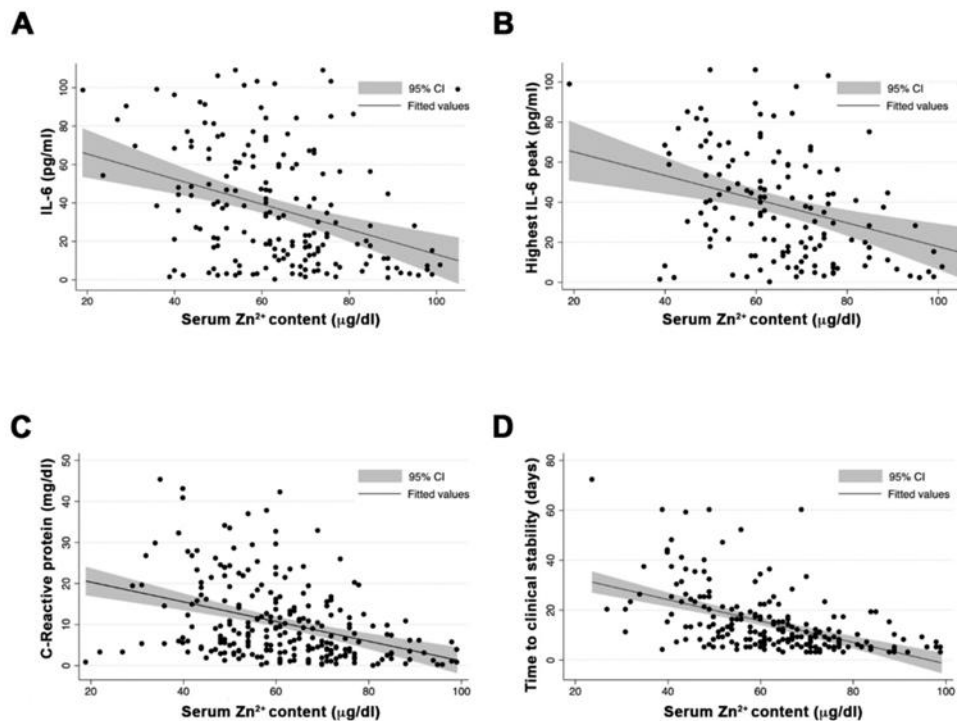
		Overall		<50 µg/dL	≥50 µg/dL	p-Value	
Cohort Characteristics		n = 24		n = 58	n = 191		
Median age, years (IQR)	65	(54–75)	65	(59–75)	64	(53–74)	0.363
Male sex (%)	127	-51%	30	-0.51%	97	-51%	0.929
Comorbidities							

Current smoker (%)	23	-9.30%	4	-7%	19	-10%	0.482
Hypertension (%)	141	-56%	33	-57%	108	-57%	0.962
Diabetes mellitus (%)	53	-21%	17	-29%	36	-19%	0.088
Chronic lung disease (%)	22	-9%	9	-16%	13	-7%	0.041
Chronic heart disease (%)	37	-14%	11	-19%	26	-14%	0.315
Chronic renal disease (%)	70	-12%	22	-38%	48	-25%	0.058
Chronic liver disease (%)	18	-7%	1	-2%	17	-9%	0.065
Dementia (%)	8	-3%	2	-3%	6	-3%	0.908
HIV infection (%)	5	-2%	1	-2%	4	-2%	0.865
Active cancer (%)	7	-3%	3	-5%	4	-2%	0.214
Charlson Comorbidity Index, median (IQR)	1	(0-3)	1	(0-3)	1	(0-2)	0.247
Symptoms at onset							
Median days since symptoms onset (IQR)	7	(0-4)	6	(3-7)	7	(5-10)	0.005
Dyspnoea (%)	151	-60%	42	-72%	109	-57.57%	0.036
Fever (%)	203	-81%	45	-77%	158	-82%	0.377
Cough (%)	198	-79%	43	-74%	155	-81%	0.246
Diarrhea (%)	68	-27%	12	-21%	56	-29%	0.196
Clinical markers at onset							
Median C-reactive protein mg/dL(IQR)	7.5	(3.5–15.2)	14.6	(5–24)	7	(3–13)	0.037
Median lymphocyte count/mL(IQR)	1.02	(0.71–1.4)	0.82	(0.57–1.18)	1.1	(0.78–1.48)	0.598
Median interleukin (IL)-6 pg/mL(IQR)	42	(15–89)	77	(39–145)	32	(11–71)	<0.001
Median lactate dehydrogenase UI/l(IQR)	288	(241–345)	356	(275–483)	274	(231–362)	0.001
Median D-dimer UI/l (IQR)	800	(470–1450)	935	(540–1700)	800	(460–1215)	0.048
Median PaO ₂ /FiO ₂ ratio (IQR)	177	(100–299)	124	(91–181)	219	(106–314)	<0.001
Median modified early warning score (MEWS)(IQR)	2	(1–3)	2	(2–3)	2	(1–3)	0.005
Median serum zinc mcg/mL(IQR)	61	(50–71)	43	(39–48)	66	(58–74)	<0.001

Hydroxychloroquine (%)	248	-99.50%	58	-100%	190	-99%	0.372
Azythromicin (%)	231	-95%	57	-95%	174	-95%	0.766
Tocilizumab (%)	55	-23%	23	-40%	32	-17%	<0.001
Dexamethasone (%)	64	-26%	24	-41%	40	-21%	<0.001
Methylprednisolone (%)	59	-24%	26	-45%	33	-17%	<0.001

		Overall	<50 µg/dL		≥50 µg/dL		p
Value Cohort Characteristics		n = 249	n = 58		n = 191		
Median age, years (IQR)	65	(54-75)	65	(59-75)	64	(53-74)	0.363
Male sex (%)	127	-51%	30	-51%	97	-51%	0.929
Comorbidities							
Current smoker (%)	23	-9.30%	4	-7%	19	-10%	482
Hypertension (%)	141	-56%	33	-57%	108	-57%	0.962
Diabetes mellitus (%)	53	-21%	17	-29%	36	-19%	0.088
Chronic lung disease	22	-9%	9	-16%	13	-7%	0.041
Chronic heart disease	37	-14%	11	-19%	26	-14%	0.315
Chronic renal disease	70	-12%	22	-38%	45	-25%	0.058
Chronic liver disease	18	-7%	1	-2%	17	-9%	0.065
Dementia (%)	8	-3%	2	-3%	6	-3%	0.908
HIV infection (%)	5	-2%	1	-2%	4	-2%	0.865
Active cancer (%)	7	-3%	3	-5%	4	-2%	0.214
ACE inhibitors (%)	61	-24%	12	-21%	49	-26%	0.441

Figure 1. Correlation between serum zinc levels at admission, inflammatory markers, and clinical outcome. (A) Zinc and IL-6 at admission. (B) Zinc at admission and highest value of IL-6 during the episode. (C) Zinc and C-reactive protein at admission. (D) Serum zinc content at admission and time to clinical stability

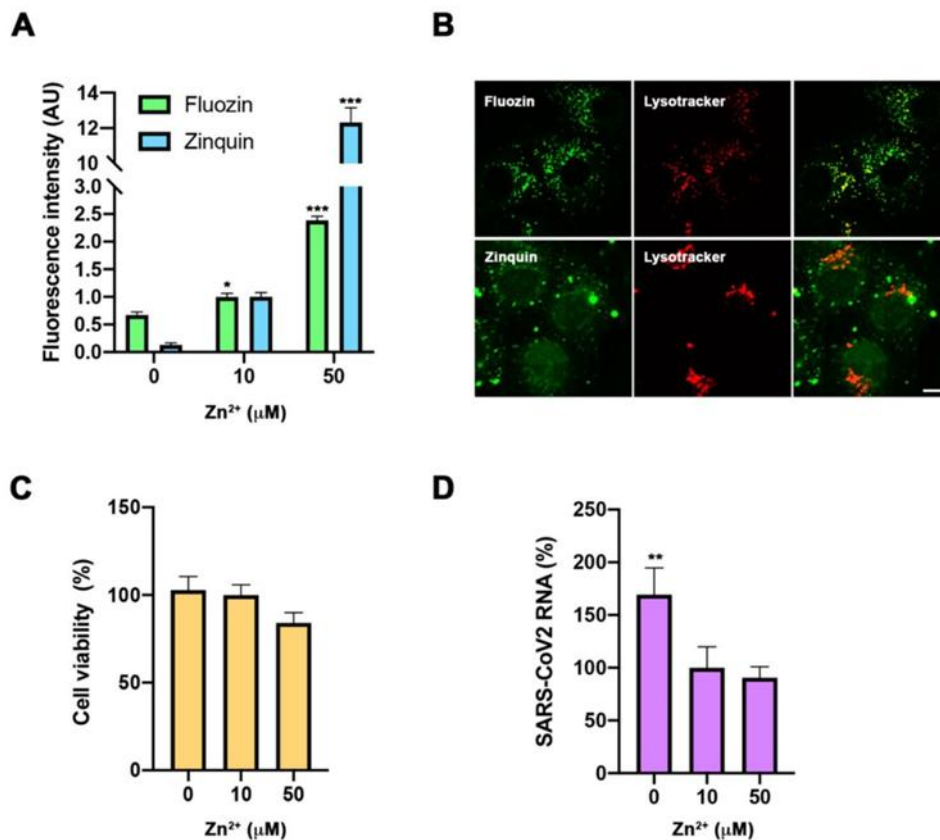


Impact of Cellular Zinc Content on SARS-CoV2 Expansion

Besides its impact on immune response, SZC might influence viral expansion . Therefore, to obtain a wider picture of determinants involved in COVID-19 severity derived from SZC, we carried out assays in a cell culture to study the direct impact of cellular zinc content on SARS-CoV-2 multiplication. We used three different concentrations of zinc in the extracellular medium—0, 10, and 50 μM ZnSO_4 —to reproduce zinc deficiency, physiological zinc, and zinc supplementation, respectively. As expected, intracellular Zn^{2+} content changed in Vero E6 cells incubated for 30 min in different extracellular Zn^{2+} concentrations and monitored with FluoZin 3AM and Zinquin fluorescence probes. Confocal images showed that the FluoZin 3AM signal was mainly localized in the lysosomal compartment, while the Zinquin signal was intracellularly spread . After 48 h incubation, different Zn^{2+} content solutions did not impact cell viability. Importantly, extracellular zinc concentrations affected SARS-CoV-2 multiplication, as measured by qPCR from the cell culture supernatant at 48 h post-infection. SARS-CoV-2 multiplication was increased at 0 μM Zn^{2+} when compared to those values at 10 and 50 μM Zn^{2+}

concentrations . This indicates that zinc levels affect the SARS-CoV-2 life cycle in infected cells

Figure 2. Evaluation of zinc homeostasis in SARS-CoV-2 infection. (A,B). Intracellular zinc content measurement using FluoZin-3AM and Zinquin probes in Vero E6 cells. (A). Flow cytometry in cells incubated for 30 min with 0, 10, and 50 μM extracellular Zn^{2+} content. Intensity expressed in arbitrary units (AU) ($n = 3$; * $p < 0.05$, *** $p < 0.001$; Bonferroni-corrected one-way ANOVA compared to 0 Zn^{2+}). (B). Confocal images of living cells incubated with FluoZin-3AM (up) or Zinquin (bottom) and LysoTracker in 50 μM Zn^{2+} extracellular medium. Scale bar = 10 μm . (C). Viability MTT assay in cells incubated with 0, 10, and 50 μM extracellular Zn^{2+} content for 48 h. Data expressed in percentage compared to control condition (10 μM Zn^{2+}) ($n = 12$; Bonferroni-corrected one-way ANOVA compared to 10 μM Zn^{2+}). (D). Quantification in supernatant of viral RNA copies by qPCR in cells infected with SARS-CoV-2 and collected at 48 h. Data expressed in percentage compared to control condition (10 μM Zn^{2+}) ($n = 3$; ** $p < 0.01$; Bonferroni ANOVA compared to 10 μM Zn^{2+}).



Assessment of Zinc Properties as a Potentiator of Chloroquine’s Antiviral Action

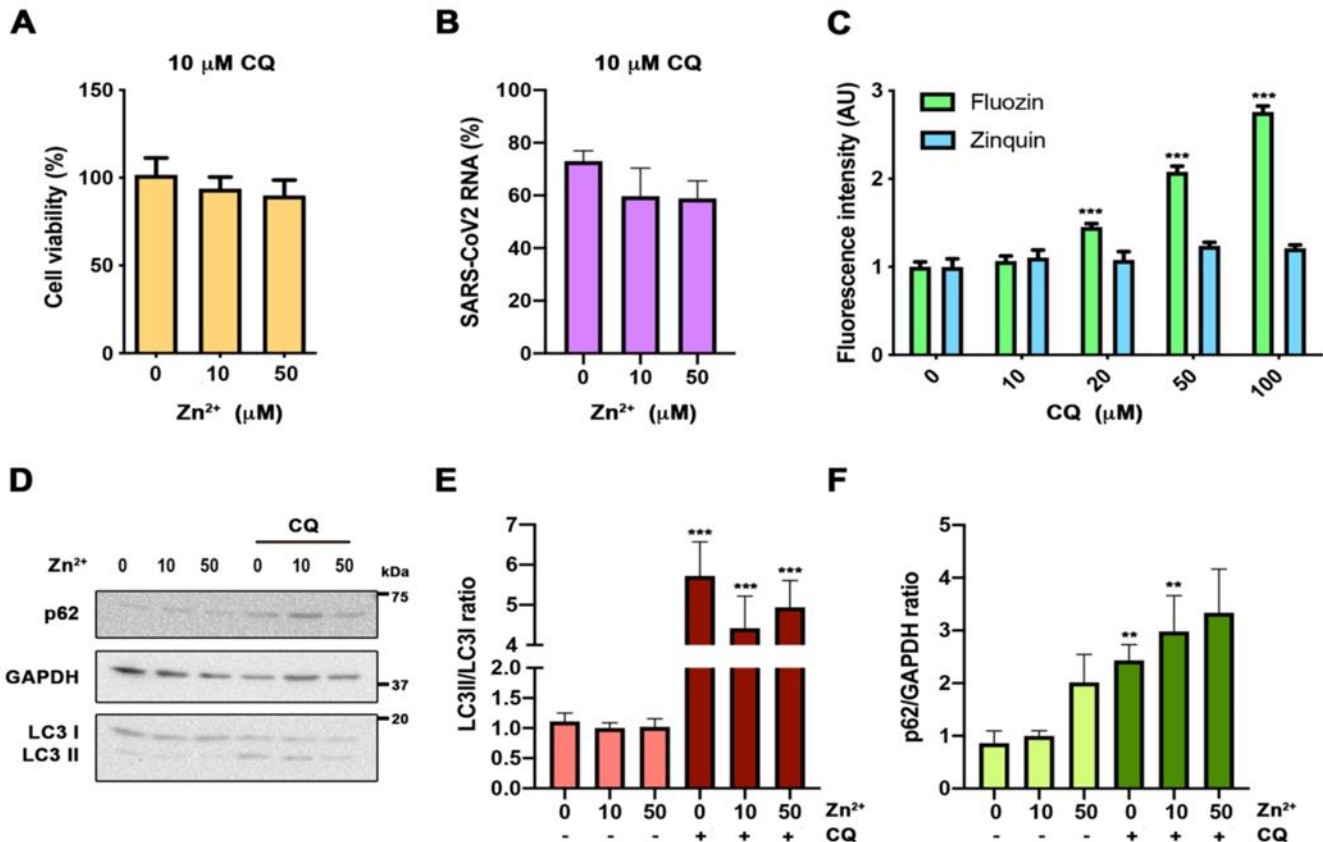
It has been suggested that Zn²⁺ may potentiate CQ antiviral activity, because CQ acts as a zinc ionophore. Zinc supplementation, in combination with CQ, has been used to treat COVID-19 patients, showing benefits. To test the potentiation effect against COVID-19, we carried out SARS-CoV-2 infections at different zinc concentrations in the absence or presence of 10 μM CQ; the concentration was chosen based on previously published effective concentrations. Neither the CQ toxicity nor its antiviral activity were affected by zinc levels. CQ caused a significant reduction in SARS-CoV2 RNA genome copies compared to control cells (59.68% 18.46%; $p < 0.05$). Next, we addressed whether CQ increases the intracellular Zn²⁺ content by acting as a zinc ionophore, as was previously proposed. For this, we evaluated the cytosolic Zn²⁺ levels in cells grown under different CQ concentrations, using flow cytometry analysis and FluoZin-3AM and Zinquin labels. Notably, an increased zinc signal was observed in a CQ dose-dependent manner using FluoZin-3AM, but not with Zinquin. This indicates that CQ modifies lysosomal Zn²⁺ content, but is not a zinc ionophore. As the described increase in

lysosomal pH caused by CQ blocks autophagic flux and inhibition of autophagy impairs SARS-CoV-2 replication, we studied the impact on autophagy of different zinc concentrations in the presence and the absence of CQ. As expected, at 10 μM, CQ treatment autophagy blockade resulted in an increased LC3II/I ratio and p62 expression. However, no significant effects on these values were observed at different Zn²⁺ levels in the absence or presence of CQ. Altogether, our results indicate that CQ and zinc do not potentiate each other.

Figure 3. Evaluation of zinc potentiation of chloroquine antiviral action. (A) Viability MTT assay in cells incubated with 10 μM chloroquine (CQ) in 0, 10, and 50 μM Zn²⁺ content for 48 h ($n = 15$; Bonferroni-corrected one-way ANOVA compared to 10 μM Zn²⁺). (B) Quantification in the supernatant of viral RNA copies by qPCR in cells infected with SARS-CoV-2 treated with 10 μM CQ in 0, 10, and 50 μM Zn²⁺, and collected at 48 h. Data expressed in percentage compared to control condition (10 μM Zn²⁺ without CQ,) ($n = 3$; Bonferroni-corrected one-way ANOVA compared to 10 μM CQ in 10 μM Zn²⁺). (C) Flow cytometry in cells incubated for 30 min with 0, 10, and 50 μM extracellular Zn²⁺ content using FluoZin-3AM and Zinquin probes.

Intensity expressed in arbitrary units (AU) ($n \geq 4$; *** $p < 0.001$; Bonferroni-corrected one-way ANOVA compared to 0 μM Zn^{2+} from each probe). (D–F) Western blot analysis from cells incubated for 24 h in 0, 10, and 50 μM Zn^{2+} with or without 10 μM CQ. Antibodies against microtubule-associated proteins 1A/1B light chain 3B (LC3), p62, and

glyceraldehyde 3-phosphate dehydrogenase (GAPDH). (D) Representative blot. (E,F) Quantification of the bands for LC3 ((E) $n \geq 10$) and p62 ((F) $n \geq 7$) (Bonferroni-corrected one-way ANOVA compared to 10 μM Zn^{2+} or 10 μM CQ in 10 μM Zn^{2+} ; ** $p < 0.01$, *** $p < 0.001$ unpaired t-test comparing conditions with and without CQ).



Discussion

This study demonstrates a correlation between serum zinc levels and COVID-19 outcome. SZC lower than $<50 \mu\text{g/dL}$ at admission correlated with worse clinical presentation, longer time to recovery, and higher mortality. These results might suggest that SZC impacts COVID-19 severity, and its adjustment might also constitute an early therapeutic intervention point. These results are in accordance with the observational studies carried out by other groups with smaller cohorts^[6]. Moreover, we show that SZC affects the SARS-CoV-2 life cycle in infected cells. This effect, contrary to what it has been previously suggested, does not seem to potentiate CQ activity.

The association between zinc and human health has been known for decades. Due to poor nutrition and

subsequent low zinc intake, ZD remains a major nutritional problem in multiple countries^[7]. Elderly individuals are prone to ZD even in developed countries, where the incidence ranges from 15% to 31%, depending on the age and the country of study. Older adults are the group at higher risk for severe symptoms and mortality from COVID-19^[8]. In our retrospective observational study, with 249 COVID-19 patients admitted to Hospital del Mar, at admission 23% of them had SZC lower than $50 \mu\text{g/dL}$, the cutoff associated with severe ZD and development of clinical signs^[9]. At onset, higher levels of inflammatory markers, such as IL-6 and C-reactive protein, were present in low SZC patients. The prognostic value of IL-6 and C-reactive protein for COVID-19 severity has already been described^[10]. In this work, we add SCZ as a novel

early predictor for COVID-19 outcome. In addition, we observed a robust negative correlation between zinc levels and the highest peak of IL-6 highest peak^[11]. These results suggest that COVID-19 patients with low SZC have an exacerbated immune response. ZD is known to be associated with proinflammatory responses at infection, showing higher reactive oxygen species production and inflammatory markers^[12]. An imbalance in cytokine production by cells of both innate and adaptive immunity has also been reported. Several clinical trials using zinc supplementation have been carried out to prevent and treat infections and inflammatory conditions. Zinc supplementation decreases the incidence of infection in elderly and improves cytokine imbalance and oxidative stress markers. Thus, the idea of supplementing low SZC COVID-19 patients with zinc in order to balance what has been called the cytokine storm caused by SARS-CoV-2 is attractive^[13]. Reassuringly, zinc supplementation for the common cold caused by rhino and coronaviruses has been proven to reduce its duration and symptoms. In addition to the impact of zinc in the modulation of the antiviral immune response, zinc has also been shown to have direct antiviral action. We have analyzed in vitro the impact of zinc homeostasis in SARS-CoV-2 infection. Our results indicate that hypozincemia favors viral expansion in the infected cell. These results would support that the poor clinical outcome observed in low-SZC patients is caused by the effect of low zinc availability on both, inducing immune imbalance and increasing viral load by promoting viral expansion in the infected cell^[14]. However, it is noteworthy that our in vitro studies did not show a replication blockade in zinc supplementation conditions (50 µM, Figure C), suggesting the need of a zinc ionophore to further increase cytosolic zinc levels in order to block viral replication, as previously shown in vitro for herpes simplex, picornavirus, arbovirus, and SARS-CoV. This study has some limitations, since we cannot prove causality^[15]. Thus, zinc levels at admission could be impacted by other factors, such as acute phase reactants. Moreover, this is a single center study with a limited sample size.

Conclusions

Our work aims to focus clinical attention on serum zinc content in COVID-19 patients. Our analysis has shown a robust correlation between low SZC and

COVID-19 severity and mortality. The cause is likely to be a combination of immune system imbalance and a direct benefit of viral replication. Thus, we propose SZC as a novel and additional parameter to predict COVID-19 outcome. It is then urgent to start clinical trials supplementing patients with low SZC at admission with zinc to reestablish zinc homeostasis.

References

1. Prasad, A.S. Discovery of human zinc deficiency: Its impact on human health and disease. *Adv. Nutr.* **2013**, *4*, 176–190.
2. Gammoh, N.Z.; Rink, L. Zinc in infection and inflammation. *Nutrients* **2017**, *9*, 624.
3. Beck, F.W.; Prasad, A.S.; Kaplan, J.; Fitzgerald, J.T.; Brewer, G.J. Changes in cytokine production and T cell subpopulations in experimentally induced zinc-deficient humans. *Am. J. Physiol.* **1997**, *272*, E1002–E1007
4. Jarosz, M.; Olbert, M.; Wyszogrodzka, G.; Młyniec, K.; Librowski, T. Antioxidant and anti-inflammatory effects of zinc. Zinc-dependent NF- κ B signaling. *Inflammopharmacology* **2017**, *25*, 11–24.
5. Wessels, I.; Haase, H.; Engelhardt, G.; Rink, L.; Uciechowski, P. Zinc deficiency induces production of the proinflammatory cytokines IL-1 β and TNF α in promyeloid cells via epigenetic and redox-dependent mechanisms. *J. Nutr. Biochem.* **2013**, *24*, 289–297.
6. Hasan, R.; Rink, L.; Haase, H. Zinc signals in neutrophil granulocytes are required for the formation of neutrophil extracellular traps. *Innate Immun.* **2013**, *19*, 253–264.
7. Hasan, R.; Rink, L.; Haase, H. Chelation of Free Zn²⁺ Impairs Chemotaxis, Phagocytosis, Oxidative Burst, Degranulation, and Cytokine Production by Neutrophil Granulocytes. *Biol. Trace Elem. Res.* **2016**, *171*, 79–88.
8. Science, M.; Johnstone, J.; Roth, D.E.; Guyatt, G.; Loeb, M. Zinc for the treatment of the common cold: A systematic review and meta-analysis of randomized controlled trials. *CMAJ* **2012**, *184*, E551–E561.

9. Read, S.A.; Obeid, S.; Ahlenstiel, C.; Ahlenstiel, G. The Role of Zinc in Antiviral Immunity. *Adv. Nutr.* **2019**, *10*, 696–710.
10. Te Velhuis, A.J.W.; van den Worm, S.H.E.; Sims, A.C.; Baric, R.S.; Snijder, E.J.; van Hemert, M.J. Zn(2+) inhibits coronavirus and arterivirus RNA polymerase activity in vitro and zinc ionophores block the replication of these viruses in cell culture. *PLoS Pathog.* **2010**, *6*, e1001176.
11. Subbe, C.P.; Davies, R.G.; Williams, E.; Rutherford, P.; Gemmell, L. Effect of introducing the Modified Early Warning score on clinical outcomes, cardio-pulmonary arrests and intensive care utilisation in acute medical admissions. *Anaesthesia* **2003**, *58*, 797–802.
12. Wessells, K.R.; King, J.C.; Brown, K.H. Development of a Plasma Zinc Concentration Cutoff to Identify Individuals with Severe Zinc Deficiency Based on Results from Adults Undergoing Experimental Severe Dietary Zinc Restriction and Individuals with Acrodermatitis Enteropathica. *J. Nutr.* **2014**, *144*, 1204–1210.
13. Liu, J.; Cao, R.; Xu, M.; Wang, X.; Zhang, H.; Hu, H.; Li, Y.; Hu, Z.; Zhong, W.; Wang, M. Hydroxychloroquine, a less toxic derivative of chloroquine, is effective in inhibiting SARS-CoV-2 infection in vitro. *Cell Discov.* **2020**, *6*, 16.
14. Yao, X.; Ye, F.; Zhang, M.; Cui, C.; Huang, B.; Niu, P.; Liu, X.; Zhao, L.; Dong, E.; Song, C.; et al. In Vitro Antiviral Activity and Projection of Optimized Dosing Design of Hydroxychloroquine for the Treatment of Severe Acute Respiratory Syndrome Coronavirus 2 (SARS-CoV-2). *Clin. Infect. Dis.* **2020**, *71*, 732–739.
15. Xue, J.; Moyer, A.; Peng, B.; Wu, J.; Hannafon, B.N.; Ding, W.-Q. Chloroquine is a zinc ionophore. *PLoS ONE* **2014**, *9*, e109180.